

TITAN®

Titan® Large Bulk CO₂ stations are engineered for exceptional performance, durability, versatility, and value.

TITAN® LARGE BULK CO₂

Available in 6-ton up to 50-ton capacities, Cyl-Tec's Titan® Large Bulk CO₂ tanks come equipped with standard features of re-condensing coils, and extra liquid & vapor lines.

KEY FEATURES

- Heavy-duty, dent-resistant, steel-alloy outer jacket
- Dual relief system - eliminates safety concerns
- Stainless steel piping and ball valves standard on all models
- Custom configurations available
- Stainless steel inner vessels available

DESIGN

- Vacuum-jacketed design eliminates the need for mechanical refrigeration and the associated monthly costs (electrical, maintenance)
- Superior hold time eliminates product losses due to venting
- Lowest overall cost of ownership
- **Telemetry-ready** — CylConnect® remote monitoring systems provide updates and alerts via mobile app or desktop computer

**HORIZONTAL
MODELS
Available**



CylConnect® Remote Monitoring

Titan® Bulk Telemetry

Sensors monitor tank liquid level and pressure



One Resource. Zero Headaches.®

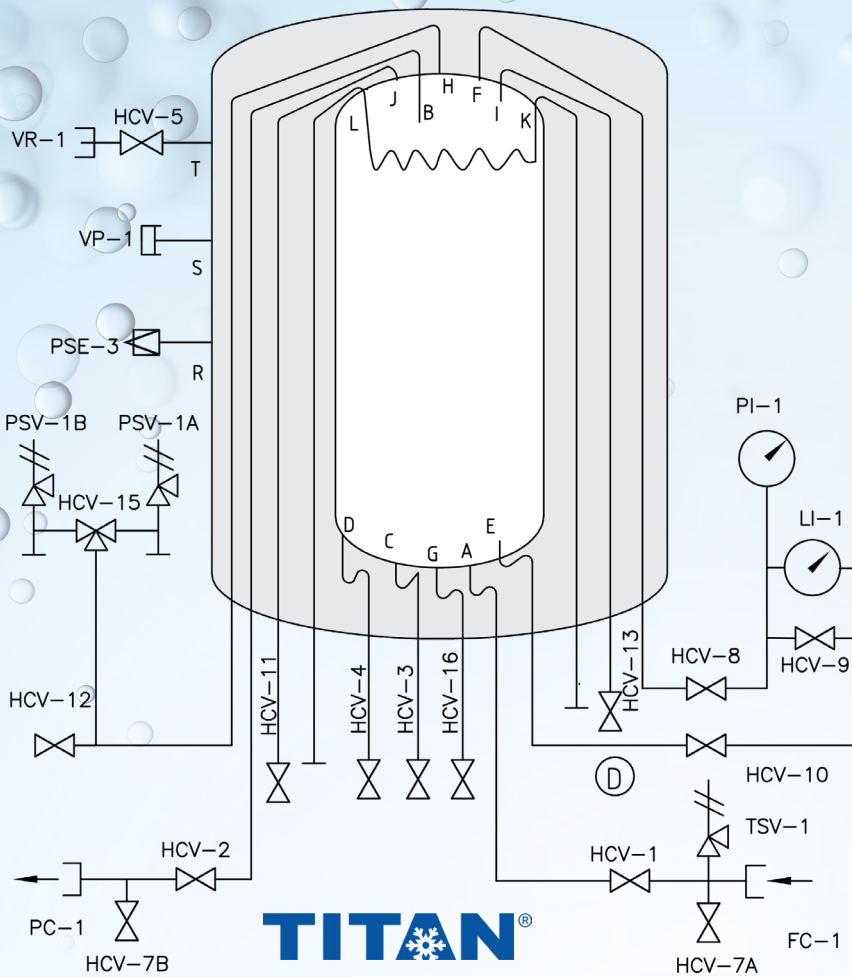
Your one resource for gas cylinders, cryogenic vessels, small & large bulk tanks, valves, and cryo repair services.

(Customers outside U.S. call +1-630-844-8800.)

U.S. TOLL FREE **888-429-5832**

www.cyl-tec.com  **Cyl-Tec®**

TITAN® LARGE BULK CO₂ OPERATING DIAGRAM



KEY

FC-1	Connection, Fill
PC-1	Connection, Vapor Return
HCV-1	Valve, Bottom Fill
HCV-2	Valve, Vapor Return
HCV-3	Valve, Product Use
HCV-4	Valve, PB Liquid
HCV-5	Valve, Vacuum Gauge
HCV-7A	Valve, Fill Line Drain
HCV-7B	Valve, Vapor Return Drain
HCV-8	Valve, LI-1 Vapor Phase
HCV-9	Valve, LI-1 Equalization
HCV-10	Valve, LI-1 Liquid Phase
HCV-11	Valve, PB Vapor
HCV-12	Valve, Vent
HCV-13	Valve, Auxiliary Vapor
HCV-15	Valve, Safety Relief Selector
HCV-16	Valve, Auxiliary Liquid
LI-1	Level Indicator, Inner Vessel
PI-1	Press Gauge, Inner Vessel
PSV-1A	Press Safety Valve
PSV-1B	Press Safety Valve
TSV-1	Thermal Safety Valve, Fill
PSE-3	Press Safety Element, OTR Vessel
VP-1	Valve, Vacuum Pump
VR-1	Vacuum Readout, OTR Vessel

LEGEND

	Connector
	Pressure Gauge
	Pressure Safety Element
	Safety Valve
	Valve

		Gross Capacity		Net Capacity		MAWP		Tare Weight		Length/Height		Diameter	
		Carbon Dioxide											
MODEL (Horz./Vert.)		U.S. ton	metric tonne	U.S. ton	metric tonne	psig	bar	lb.	kg	ft./in.	mm	ft./in.	mm
6 Ton	H	5.9	5.4	5.6	5.1	334	23	11,784	5,345	17' 5"	5,309	5' 8"	1,727
	V							11,304	5,127	18'	5,486	5' 8"	1,727
14 Ton	H	14.0	12.7	13.3	12.0	334	23	20,945	9,500	21'	6,401	7' 4"	2,235
	V							20,073	9,105	21' 9"	6,629	7' 4"	2,235
30 Ton	H	30.5	27.7	29.0	26.3	334	23	46,000	20,865	29' 5"	8,966	8' 6"	2,591
	V							43,500	19,731	30' 9"	9,373	8' 7"	2,616
50 Ton	H	50.8	46.0	48.2	43.7	334	23	69,800	31,661	36' 9"	11,201	9' 6"	2,896
	V							66,500	30,164	37' 6"	11,430	9' 7"	2,921

Cyl-Tec, Inc.
971 W. Industrial Dr.
Aurora, IL 60506

Local & Outside U.S: 630-844-8800
U.S. Toll Free: 888-429-5832
Fax: 630-844-5100

info@cyl-tec.com
www.cyl-tec.com



© 2023-08 Cyl-Tec, Inc. All rights reserved.