



Titan™ SI Large Bulk Stations are engineered for exceptional performance, durability, versatility & value. Available in Liquid Oxygen, Nitrogen, or Argon service.

TITAN™ SI LARGE BULK

Give Cyl-Tec a call to hear more about our Titan™ SI Large Bulk Stations. 1500, 3000 and 6000 gallon models in 250 psig working pressure available from stock. Other sizes and pressures available.

HIGH PERFORMANCE

- Vacuum jacketed and super insulated for reduced product losses & extended hold times
- Combination Pressure building/economizer regulator
- Dual Relief System - Eliminates safety concern

VERSATILITY & VALUE

- Sizes, pressures, & configurations to meet most applications
- Backed by competitive 5-year warranty
- Custom piping configurations available
- Medium pressure (250 psi) delivery
- LOX, LIN, LAR gas services available
- Digital Telemetry Ready
- Lease & Purchase options available
- Extended leg design for easier mounting
- Tank mounted vaporizers available (1500 gallon)

DURABILITY & DESIGN

- Welded stainless steel piping
- Built to ASME Sec. VIII, Div. 1 Specifications
- Plumbing in accordance with ASME B31.3
- Durable urethane dual coat paint / primer
- Extended bonnet Herose® control valves

CALL US DIRECT 888-429-5832

www.cyl-tec.com



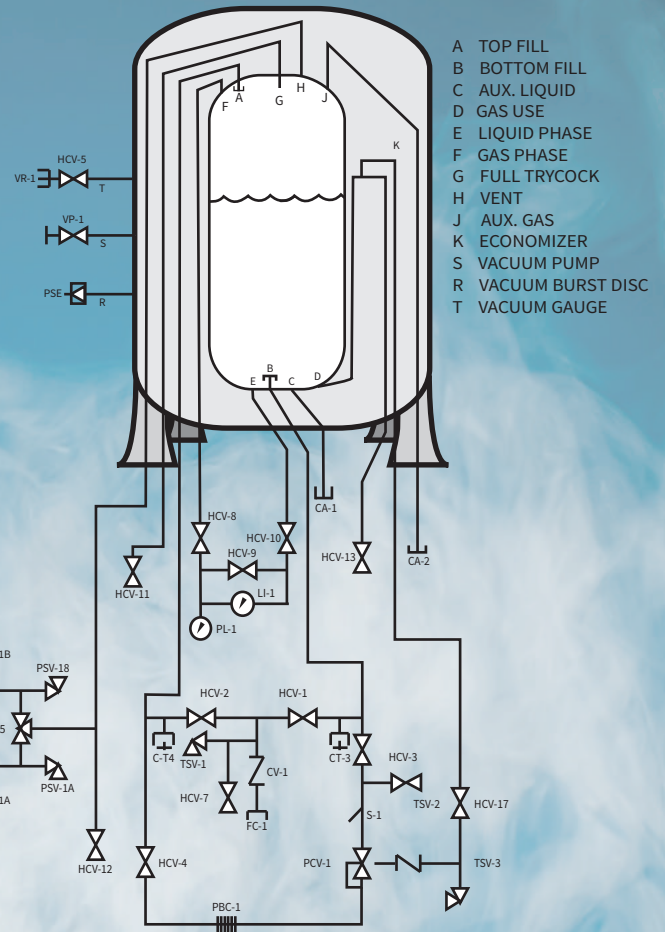
OPERATING DIAGRAM (1500, 3000, 6000 gal)

LEGEND

	Thermal Safety		Pressure Gauge
	Diverter Valve		Valve
	Regulator		

KEY

CA-1	Connection, Aux, Liquid	HCV-15	Valve, Safety Relief Selector
CA-2	Connection, Aux, Gas	HCV-17	Valve, Economizer
CA-3	Connection, Test	LI-1	Level Indicator, Inner Vessel
CA-4	Connection, Test	PL-1	Pressure Gauge, Inner Vessel
CV-1	Check Valve, Fill	PSV-1A	Pressure Safety Valve, Inner Vessel
FC-1	Connection, Fill	PSV-1B	Pressure Safety Valve, Inner Vessel
HCV-1	Valve, Bottom Fill	PSE-1A	Rupture Disc, PRD, Inner Vessel
HCV-2	Valve, Top Fill	PSE-1B	Rupture Disc, PRD, Inner Vessel
HCV-3	Valve, Fill Line Drain	PCV-1	Combination Reg. W/Check Valve
HCV-4	Valve, PB Inlet	CV-2	Combination Reg. W/Check Valve
HCV-5	Valve, PB Outlet	TSV-1	Thermal Safety Valve, Fill
HCV-7	Valve, Vacuum Gauge	TSV-2	Thermal Safety Valve, Fill
HCV-8	Valve, LI-1 Vapor Gauge	TSV-3	Thermal Safety Valve, PB Circuit
HCV-9	Valve, LI-1 Equalization	S-1	Y-Strainer
HCV-10	Valve, LI-1 Liquid Phase	PSE-3	Pressure Safety Element, OTR Vessel
HCV-11	Valve, Full Trycock	VP-1	Valve, Vacuum Pump
HCV-12	Valve, Vent	VR-1	Vacuum Readout, OTR Vessel
HCV-13	Valve, Liquid Outlet	PBC-1	Pressure Build Coil



MODEL *	GROSS CAPACITY		NET CAPACITY		TARE WEIGHT		HEIGHT		DIAMETER		MAWP*	NER % / Day in N2
	Gallon	Liter	Gallon	Liter	lbs.	kg	ft.	in.	ft.	in.		
1500 GALLON	1640	6,208.1	1590	1590	9040.5	4100	18.0	216.1	5.3	63.6	250	0.54
3000 GALLON	3208	12,143.6	3108	1590	16758	7600	19.9	238.2	7.1	85.2	250	0.40
6000 GALLON	6100	23,091.0	5917	1590	27783	12,600	31.7	379.9	7.1	85.2	250	0.25

*Other models and working pressures available

MAKE IT A SYSTEM!

Cyl-Tec offers CylConnect® for liquid level and pressure remote monitoring.

