

Cyl Tec

**Titan Bulk
CO₂**



Horizontal & Vertical Bulk CO₂ Stations

The new high performance line of bulk CO₂ stations.
Available in 10, 14, 30, and 50 ton models.

The most efficient way to store & dispense bulk CO₂.

- ✓ Vacuum Jacketed Design eliminates the need for mechanical refrigeration and the associated monthly costs (electrical, maintenance)
- ✓ Superior hold time eliminates product losses due to venting
- ✓ Lowest overall cost of ownership

KEY FEATURES

- ✓ Heavy-duty, dent-resistant, steel-alloy outer jacket
- ✓ Dual Relief System - eliminates safety concerns
- ✓ Stainless steel piping and ball valves standard on all models
- ✓ Vertical or horizontal models available
- ✓ Custom configurations available



CylConnect

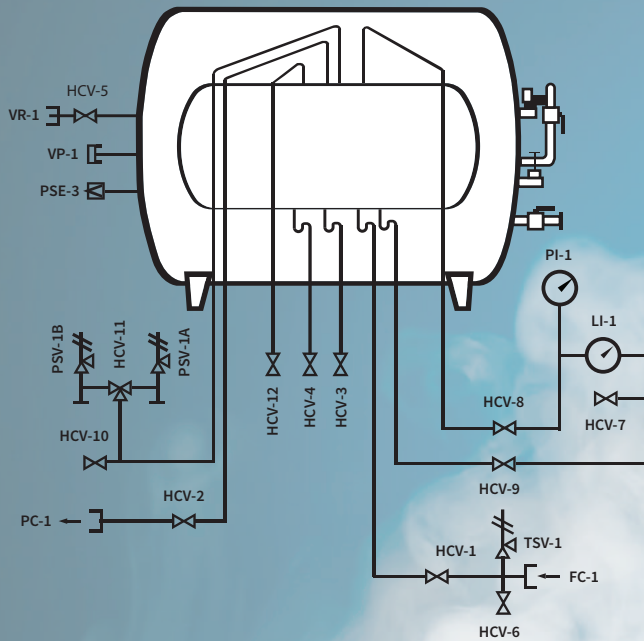
**Remote
Monitoring
Available!**

CALL US DIRECT

www.cyl-tec.com

888-429-5832

STANDARD OPERATING DIAGRAM (10 TON, 14 TON, 30 TON, 50 TON)



LEGEND



KEY

FC-1	Connection, Fill	HCV-11	Valve, Safety Relief Selection
PC-1	Connection, Vapor Return	HCV-12	PB Return
HCV-1	Valve, Bottom Fill	LI-1	Level Indicator, Inner Vessel
HCV-2	Valve, Vapor Return	PL-1	Press Gauge, Inner Vessel
HCV-3	Valve, Product Use	PSV-1A	Press Safety Valve
HCV-4	Valve, PB Out	PSV-1B	Press Safety Valve
HCV-5	Valve, Vacuum Gauge	TSV-1	Thermal Safety Valve, Fill
HCV-6	Valve, Fill Line Drain	PSE-3	Press Safety Element, OTR Vessel
HCV-7	Valve, LI-1 Equalization	VP-1	Valve, Vacuum Pump
HCV-8	Valve, LI-1 Vapor Phase	VR-1	Vacuum Readout, OTR Vessel
HCV-9	Valve, LI-1 Liquid Phase		
HCV-10	Valve, Vent		

PRODUCT SPECIFICATIONS

HORIZONTAL MODELS

MODELS	CAPACITY-GROSS (TONS CO ₂)	CAPACITY-NET (TONS CO ₂)	WIDTH, O.D.in (mm)	LENGTH,in (mm)	TARE WEIGHT,lbs (kg)
6 TON	6.9	6.6	67.5 (1716)	209 (5300)	11014 (4995)
10 TON	12.2	11.6	87.4 (2220)	223 (5650)	20683 (9380)
14 TON	14.5	13.8	87.4 (2200)	252 (6400)	22844 (10360)
30 TON	31.5	30.0	102.4 (2600)	353 (8970)	45864 (20800)
50 TON	56.2	53.3	114.2 (2900)	440 (11170)	69524 (31530)

VERTICAL MODELS

MODELS	CAPACITY-GROSS (TONS CO ₂)	CAPACITY-NET (TONS CO ₂)	WIDTH, O.D. in (mm)	HEIGHT,in (mm)	TARE WEIGHT,lbs (kg)
6 TON	6.9	6.6	83.5 (2121)	215 (5461)	10970 (4975)
10 TON	12.2	11.6	87.4 (2220)	234 (5950)	20771 (9420)
14 TON	14.5	13.8	87.4 (2200)	263 (6680)	23064 (10460)
30 TON	31.5	30.0	103.1 (2620)	371 (9430)	44541 (20200)
50 TON	56.2	53.3	115.1 (2924)	452 (11480)	69017 (31300)



CALL US DIRECT

www.cyl-tec.com

888-429-5832