



Titan® Small Bulk Industrial tanks are designed to operate like large bulk stations, but with added portability. Available for Oxygen, Nitrogen, Argon, or CO<sub>2</sub> service.

## TITAN® SMALL BULK INDUSTRIAL

Models are available in 450 to 5600 liter sizes rated up to 500 psig. Comes equipped with plumbing for quick telemetry/remote monitoring installation.

### HIGH PERFORMANCE

- Excellent thermal performance (SI insulated)
- Up to 500 psig available (VHP)
- Highest gas withdrawal rates
- External vaporizer (most models)
- External pressure builder
- Extended bonnet RegO® control valves

### DURABILITY & DESIGN

- For indoor or outdoor installations
- Features top and bottom fill valves
- Easy fill by conventional bulk trucks or small bulk trucks
- Dual relief circuit with diverter valve
- Mounted on a hot-dip galvanized steel skid
- Equipped with forklift accessible skid and lifting lugs
- 5-year warranty on vacuum

MODEL	Gross Capacity		Net Capacity		Tare Weight		Height		Footprint w/ vaporizer (LxW)		MAWP		NER
	gallon	liter	gallon	liter	lb.	kg	ft./in.	mm	in.	mm	psig	bar	% per day in N <sub>2</sub>
<b>450 L *</b>	118	450	111	420	1247	566	6' 6"	1981	36 x 36	914 x 914	500	34.5	1.40
<b>1500 L</b>	400	1514	380	1438	2646	1200	8' 11"	2719	60 x 55	1524 x 1397	500	34.5	0.75
<b>2000 L</b>	555	2101	528	1996	3351	1520	10' 1"	3073	75 x 58	1905 x 1473	500	34.5	0.70
<b>3000 L</b>	800	3028	760	2877	4387	1990	10' 2"	3095	83 x 66	2108 x 1676	500	34.5	0.60
<b>5600 L</b>	1482	5610	1408	5329	8146	3695	10' 6"	3197	97 x 85	2464 x 2159	500	34.5	0.44

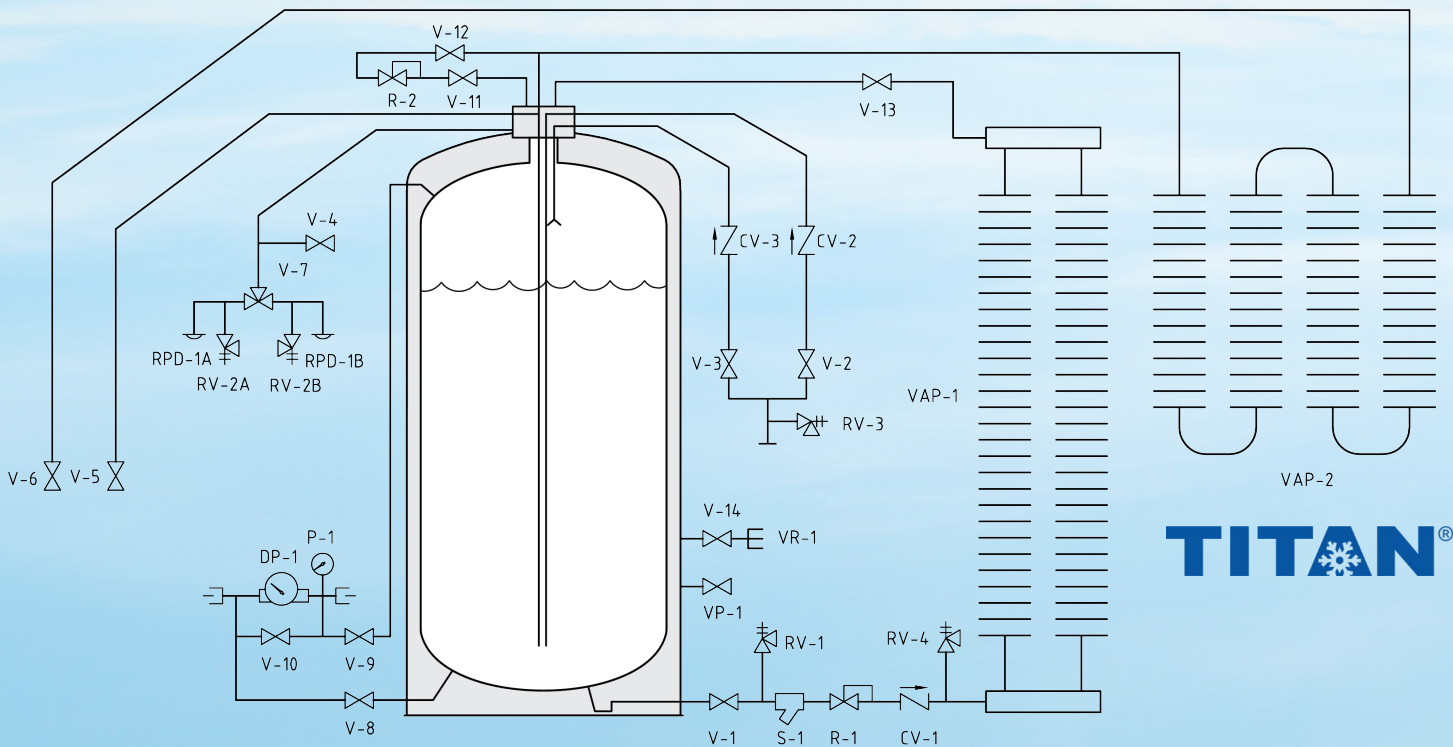
\* 450 L weight & height include galvanized steel lab base/frame. Lab base/frame weight is 280lb.

U.S. TOLL FREE **888-429-5832**

**Cyl-Tec®** [www.cyl-tec.com](http://www.cyl-tec.com)

- 450-5,600 liter tanks
- Rated up to 500 psig
- All stainless steel construction

# TITAN® SMALL BULK OPERATING DIAGRAM (450-5600 liter)



**TITAN®**

## KEY

V-1	Valve, PB	CV-2	Check Valve, Bottom Fill
V-2	Valve, Bottom Fill	CV-3	Check Valve, Top Fill
V-3	Valve, Top Fill	R-1	Regulator, PB
V-4	Valve, Vent/Full Trycock	R-2	Regulator, Economizer
V-5	Valve, Liquid Use	S-1	Y-Strainer
V-6	Valve, Gas Use	P-1	Pressure Gauge, Inner Vessel
V-7	Valve, Diverter	DP-1	Level Indicator, Inner Vessel
V-8	Needle Valve, Liquid Phase	RV-1	Thermal Safety Valve, PB
V-9	Needle Valve, Vapor Phase	RV-3	Thermal Safety Valve, Fill
V-10	Needle Valve, Equalization	RV-4	Thermal Safety Valve, PB
V-11	Valve, Economizer Shut-off	RV-2A,B	Pressure Relief Valve
V-12	Valve, Economizer Isolation	RPD-1A,B	Rupture Disc
V-13	Valve, PB Isolate	VR-1	Vacuum Readout, Outer Vessel
V-14	Valve, Vacuum Readout	VP-1	Valve, Vacuum Pump
HCV-14	Valve, Vacuum Gauge	VAP-1	Vaporizer, PB
CV-1	Check Valve, PB	VAP-2	Vaporizer, Gas Use

## LEGEND

	Check Valve
	Differential Pressure Gauge
	Diverter Valve
	Pressure Gauge
	Regulator
	Rupture Disc
	Safety Valve
	Strainer
	Valve
	Vaporizer

MODEL	450 L		1500 L		2000 L		3000 L		5600 L	
Design Specifications	ASME or DOT		ASME		ASME		ASME		ASME	
<b>CAPACITY UNITS</b>										
Nitrogen (N <sub>2</sub> )	10,332 ft <sup>3</sup>	292.6 m <sup>3</sup>	35,375 ft <sup>3</sup>	1002 m <sup>3</sup>	49,200 ft <sup>3</sup>	1393 m <sup>3</sup>	70,848 ft <sup>3</sup>	2006 m <sup>3</sup>	131,093 ft <sup>3</sup>	3712 m <sup>3</sup>
Oxygen (O <sub>2</sub> )	12,760 ft <sup>3</sup>	361.3 m <sup>3</sup>	43,686 ft <sup>3</sup>	1237 m <sup>3</sup>	60,760 ft <sup>3</sup>	1721 m <sup>3</sup>	87,494 ft <sup>3</sup>	2478 m <sup>3</sup>	161,895 ft <sup>3</sup>	4584 m <sup>3</sup>
Argon (Ar)	12,478 ft <sup>3</sup>	353.3 m <sup>3</sup>	42,723 ft <sup>3</sup>	1210 m <sup>3</sup>	59,420 ft <sup>3</sup>	1683 m <sup>3</sup>	85,565 ft <sup>3</sup>	2423 m <sup>3</sup>	158,325 ft <sup>3</sup>	4483 m <sup>3</sup>
Carbon Dioxide (CO <sub>2</sub> )	8,200 ft <sup>3</sup>	232.2 m <sup>3</sup>	28,130 ft <sup>3</sup>	797 m <sup>3</sup>	39,138 ft <sup>3</sup>	1108 m <sup>3</sup>	56,358 ft <sup>3</sup>	1596 m <sup>3</sup>	104,246 ft <sup>3</sup>	2952 m <sup>3</sup>
Carbon Dioxide (CO <sub>2</sub> )	939 lb.	425.9 kg	3,218 lb.	1460 kg	4,477 lb.	2031 kg	6,448 lb.	2925 kg	11,926 lb.	5410 kg
<b>PERFORMANCE</b>										
Gas Flow (N <sub>2</sub> , O <sub>2</sub> , Ar)	577 ft <sup>3</sup> /hr	16.3 m <sup>3</sup> /hr	1,370 ft <sup>3</sup> /hr	38.8 m <sup>3</sup> /hr	2,100 ft <sup>3</sup> /hr	59.5 m <sup>3</sup> /hr	2,100 ft <sup>3</sup> /hr	59.5 m <sup>3</sup> /hr	2,600 ft <sup>3</sup> /hr	73.6 m <sup>3</sup> /hr
Gas Flow (CO <sub>2</sub> )	203 ft <sup>3</sup> /hr	5.7 m <sup>3</sup> /hr	457 ft <sup>3</sup> /hr	12.9 m <sup>3</sup> /hr	700 ft <sup>3</sup> /hr	19.8 m <sup>3</sup> /hr	700 ft <sup>3</sup> /hr	19.8 m <sup>3</sup> /hr	867 ft <sup>3</sup> /hr	24.6 m <sup>3</sup> /hr
Gas Flow (CO <sub>2</sub> )	25 lb./hr	11.3 kg/hr	52 lb./hr	23.6 kg/hr	86 lb./hr	39.0 kg/hr	86 lb./hr	39.0 kg/hr	107 lb./hr	48.5 kg/hr

Cyl-Tec, Inc.  
971 W. Industrial Dr.  
Aurora, IL 60506

Local & Outside U.S: 630-844-8800  
U.S. Toll Free: 888-429-5832  
Fax: 630-844-5100

info@cyl-tec.com  
www.cyl-tec.com

Cyl-Tec®

© 2020-12 Cyl-Tec, Inc. All rights reserved.